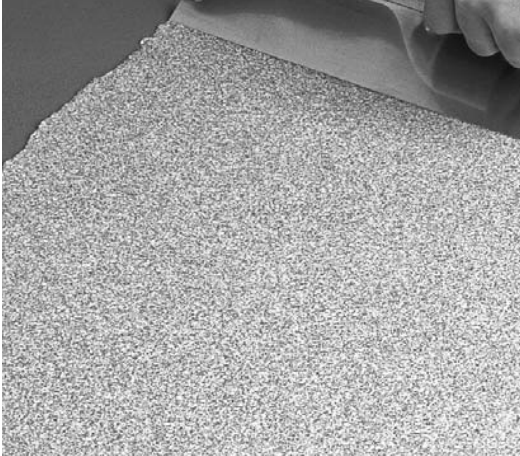


PAREX®

630 Cerastone® 632 Spraystone 634 Tuffstone Granite

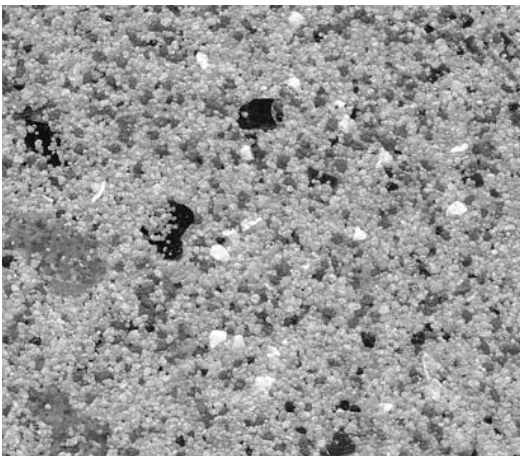
Specialty Stone Finishes



630 CERASTONE®



632 SPRAYSTONE



634 TUFFSTONE GRANITE

DESCRIPTION:

- An attractive multi-color wall finish made of colored aggregates
- Clear 100 percent acrylic vapor-permeable binder
- Can be used in interior and exterior application
Ideal for high traffic interior areas
- A highly durable, scratch-resistant finish
- Easily repaired

- 630 Cerastone and 632 Spraystone require Parex 610 Matte Clear Sealer.

USES:

Exterior finish coat over:

- Parex EIFS
- Properly prepared stucco, masonry, brick and concrete surface

Interior finish coat over:

- Drywall, plaster or properly prepared masonry or concrete

COMPOSITION:

- Binder Base: Acrylic copolymer
- Aggregate: colored quartz aggregates, mica (Tuffstone Granite)
- Water-based: VOC compliant
- Color: Standard colors for 630 Cerastone®, 632 Spraystone, 634 Tuffstone Granite

PAREX®

630 Cerastone® 632 Spraystone 634 Tuffstone Granite Specialty Stone Finishes

COVERAGE:

Depending on the condition of the substrate and method of application, approximate coverages are:

630 Cerastone®

- Including both the troweled and the sprayed coats:
90 - 120 sq. ft. (8.2 - 11 sq. m.) /pail
- Troweled tight coat alone:
140 - 200 sq. ft. (12.8 - 18.3 sq. m.) /pail
- Fine spray alone:
250 - 300 sq. ft. (23 - 27.5 sq. m.) /pail

632 Spraystone

- 70 - 110 sq. ft. (8.2 - 11 sq. m.) /pail

634 Tuffstone Granite

- 75 - 100 sq. ft. (23 - 30.5 sq. m.) /pail

CONTAINER:

630 Cerastone and 632 Spraystone
– 65 lbs (29.5 kg) net weight in plastic pails

634 Tuffstone Granite

– 60 lbs (27.2 kg) net weight in plastic pails

- Storage: Protect from sun and freezing at all times
- Do not stack pails more than 3 pails high
- Shelf Life: One year if properly stored.

DRYING TIME:

24 hours under normal conditions. High humidity and low temperatures extend drying time.

CLEANUP:

Water soluble prior to drying. Clean tools and containers with water prior to drying.

SURFACE PREPARATION:

- Remove surface contaminants such as dust or dirt without damaging the substrate.
- For previously painted surfaces, all loose and chalking paint must be removed, and glossy surfaces dulled.
- New concrete and masonry must be clean and cured a minimum of 28 days.
- Check concrete surfaces for alkalinity and treat. Any form-release agents or bond breakers must be removed.
- Uneven concrete or masonry can be leveled with 121, 121 Dry or 121 XL Base Coat & Adhesive or other suitable, compatible product.
- For interior drywall, prepare as for painting.
- To ensure the consistency of the Specialty

Stone Finish color, apply a coat of tinted 313 Sanded Primer to all surfaces to receive Specialty Stone Finishes.

- For application of Parex 313 Sanded Primer, refer to the Product Data Sheet.
- For additional options, contact ParexLahabra Technical Services Department.

MIXING:

- Use clean equipment for mixing and preparation.
- Stir to obtain a homogeneous consistency using a heavy duty 1/2 in. (13mm) drill with a rust-free paddle at 400-500 r/min. Avoid air entrainment.
- A small amount of clean, potable water may be added to aid workability. Do not exceed 8 oz (.24L) per full pail of finish. To avoid texture variations, add the same amount of water to each pail of finish.

APPLICATION:

- Read the entire label before using this product.
- For 634 Tuffstone Granite: apply to an even layer, using a clean, stainless steel trowel. Work the trowel in a single direction to make a smooth surface. Lightly float the surface using a clean plastic float several times. This will bring the large mica to the surface and enhance the granite appearance.
- For 630 Cerastone®: use a clean stainless steel trowel and apply a uniform coat slightly thicker than the aggregate size. Level and finish to a flat surface.
- Apply fine spray of 630 Cerastone® over the troweled 630 Cerastone® layer for a more uniform texture and reduced appearance of gloss.
- For 632 Spraystone: spray the first coat of 632 Spraystone over the primed surface. 632 Spraystone may be sprayed by hopper gun or other suitable plaster spray equipment (630 Cerastone® can be applied in this manner as well, especially for large surfaces). Use air pressure approximately 15 - 25 psi. If aggregate bounces back off the wall, the air pressure is too high. A second coat of sprayed 632 Spraystone may be needed to achieve the desired look.

For all Specialty Stone Finishes

- Always maintain a wet edge and work to the corners or joints.
- For best color consistency, use finish with the same batch number within a wall section.
- Keep container closed when not in use.

LIMITATIONS:

- Ambient and surface temperature must be 50° F (10°C) or higher during application and drying time. Supplemental heat and protection from precipitation must be provided as needed.
- Use only on surfaces that are sound, clean, dry, unpainted and free from any residue which may affect the ability of the finish to bond to the surface.
- Application in direct sunlight in hot weather may adversely affect aesthetics.
- Due to the nature of the raw materials used in this product, all material should be ordered at the same time to avoid color matching problems. Parex cannot assure color combinations will match between batches made at different times.
- Do not use as waterproofing. Do not use below grade.
- Do not use directly over foam plastic, gypsum board, or other insulation type boards.
- Do not apply in a thickness greater than 1/8 in. (3 mm).
- Must not be used on exposed exterior horizontal surfaces. Minimum slope is 27° or 6:12 inches
- Do not use on surfaces subject to hydrostatic pressure or continuous or intermittent water immersion
- Avoid application over damp surface or in excessively humid conditions. Finish may be come milky in color after it gets wet. This should dissipate with subsequent wetting and drying cycles.

PAREX®

Corporate Office

ParexLahabra, Inc.
4125 E. La Palma Avenue, Suite 250
Anaheim, CA 92807
(714) 778-2266
(866) 516-0061

Sales Office

Parex
1870 Stone Mountain-Lithonia Road
Redan, GA 30074
(800) 537-2739

Plants

Redan, GA
Riverside, CA
French Camp, CA
Colorado Springs, CO
Albuquerque, NM
San Antonio, TX
Wilkes Barre, PA
Ft. Pierce, FL
Dalton, GA



MEMBER OF

EIMA