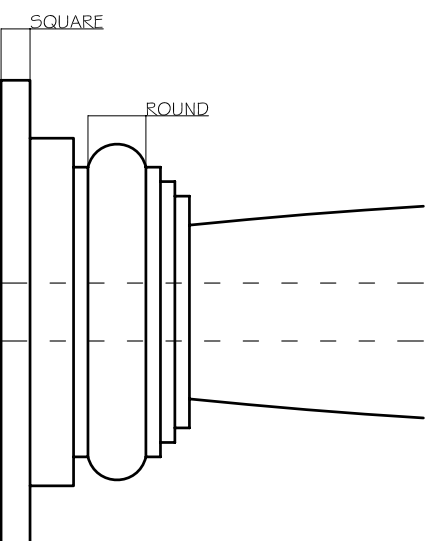


- WHEN ORDERING PLEASE BE SURE TO GIVE THE FOLLOWING:
- 1) SIZE OF SHAFT, FOR TAPERED OR BARREL SHAFTS THIS WILL BE THE SMALLEST DIAMETER
 - 2) POST CUT OUT IF REQUIRED
 - 3) CAPITOL. SEE SHEETS 23 OF 25 THROUGH 25 OF 25
 - 4) MAXIMUM SIZE WHEN ORDERING BARREL SHAFT
 - 5) OVERALL HEIGHT OF COLUMN
 - 6) BASE SEE SHEETS 23 OF 25 THROUGH 25 OF 25
 - 7) MAXIMUM SIZE. THIS APPLIES WHEN ORDERING A TAPERED SHAFT

REQUIRED INFORMATION



CAP AND BASE DETAILS CAN BE ROUND, SQUARE, A COMBINATION OF BOTH OR YOU CAN CREATE YOUR OWN!

COLUMN DETAILS

DETAIL A-A COLUMN